



GENDER

- Boy
- Girl
- Transgender
- Nonbinary

100% MUSTANGS

STUDENT BODY:

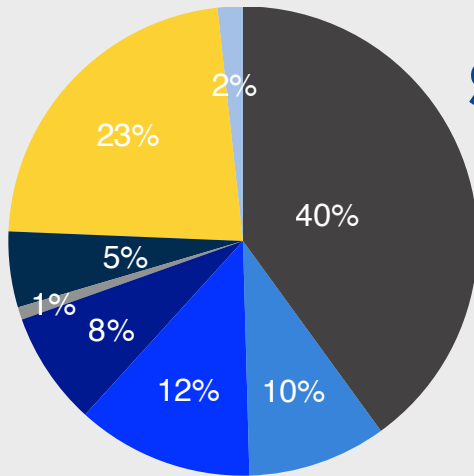
 **335**

RE-ENROLLMENT RATE:

 **93%**

FACULTY SIZE:

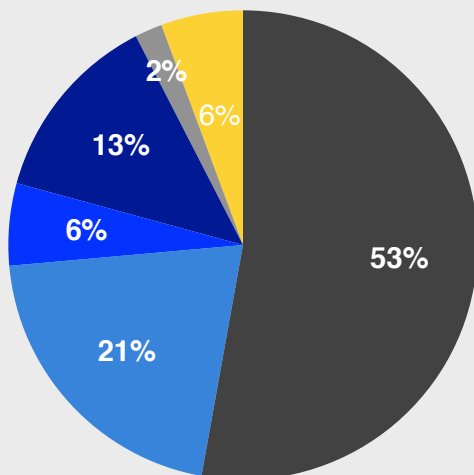
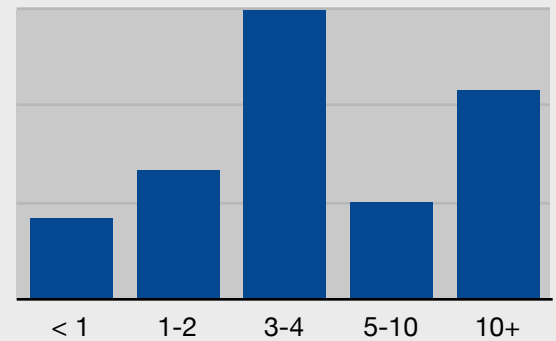
 **55**



STUDENTS

- White/European
- Hispanic/Latino
- Asian/Pacific Islander
- Black/African/Caribbean
- Native American
- Middle Eastern/Arab
- Two+ Races
- Other/Non-disclosed

STAFF YEARS OF SERVICE:



STAFF

- White/European
- Hispanic/Latino
- Asian/Pacific Islander
- Black/African/Caribbean
- Native American
- Middle Eastern/Arab
- Two+ Races
- Other/Non-disclosed

