

Merryhill Midtown 2024-2025

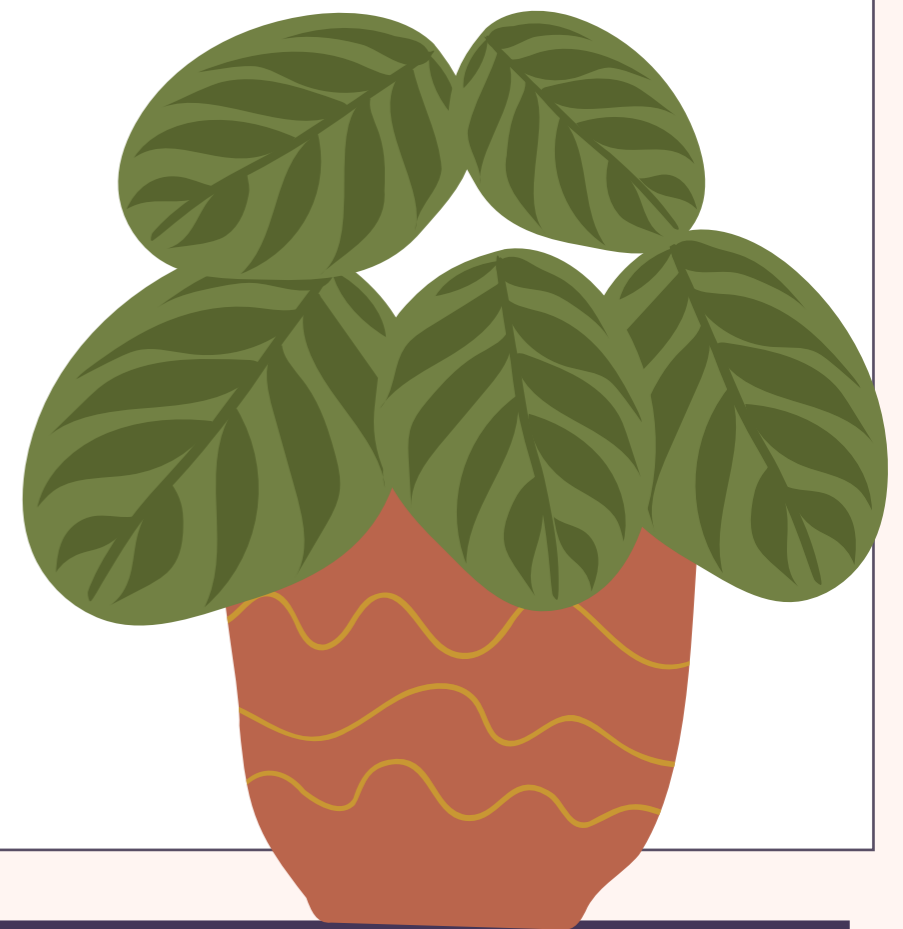
**LET THE GOOD
THINGS GROW!**

Back-to-School Night 2024



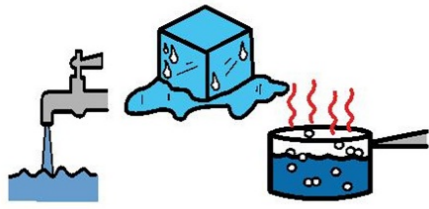
WELCOME TO 5TH GRADE

- **Meet Your Teacher**
- **Curriculum Highlights**
- **Schedules**
- **Classroom Procedures**
- **Behavior Systems**
- **Homework Policies**
- **Grading**
- **Field Trips**
- **Get Involved**
- **Communication**



CURRICULUM HIGHLIGHTS

States of Matter



LANGUAGE ARTS

- **Guided Reading:** Whole-Class Novels and Literature Circles
- **Writer's Workshop:** Argumentative/Persuasive Writing and revisiting Narrative Writing (Paragraph of the Week - POW)
- **Vocabulary:** Daily Dose and Standard Start
- **Grammar:** Interactive Notebooks

SOCIAL STUDIES

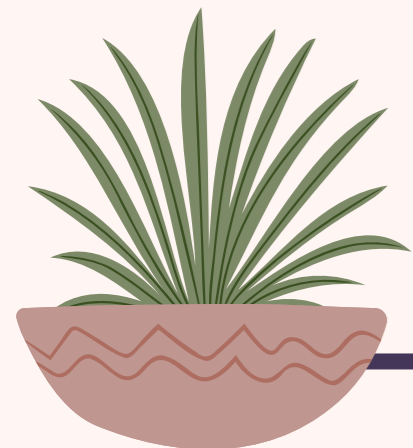
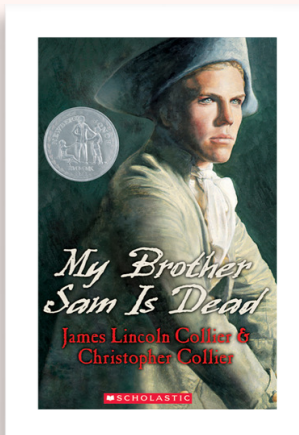
- **Geography:** State Project - Weekly Geography
- **U.S. History:** Explorers, Colonists, American Revolution, Establishing Our Government, Founding of Our States, and Westward Expansion

MATH

- **Operations:** Whole Numbers, Fractions, and Decimals
- **Real-World Problem Solving**
- **Introduction to Geometry and Algebra**

SCIENCE

- **Earth Science with Space**
- **Earth's Spheres:** Integrated Writing with Instructional Essay
- **Properties of Matter:** States of Matter, Chemical vs. Physical Reactions



SCHEDULES

Mrs. Laudato's Schedule 2024-2025

	Monday	Tuesday	Wednesday	Thursday	Friday
8:15-8:30am	Morning Work: Complete Weekly Geography and Daily Dose				
8:30-9:15am	Monday Morning Meeting (8:30-9:00)	Science	Social Studies	Science	Social Studies
9:15-9:45am	Social Studies (9:00-9:45)	Reading	Art (9:00-9:45)	Reading	Reading
9:50-10:05am	Recess	Recess	Recess	Recess	Recess
10:10-10:35am	Daily Dose Vocabulary	Daily Dose Vocabulary	Daily Dose Vocabulary	Daily Dose Vocabulary	Daily Dose Vocabulary
10:40-11:25am	Spanish	PE	Music	Spanish	PE
11:30-11:55am	Writing	Writing	Reading	Writing	Writing
12:00-12:25pm	Recess	Recess	Recess	Recess	Recess
12:25-12:55pm	Lunch	Lunch	Lunch	Lunch	Lunch
1:00-1:50pm	Reading	Spanish	Design Lab (Week 1)	Extra LA Block - Projects/IXL	Extra LA Block - Projects/IXL
1:55-2:40pm	Math	Math	Math	Math	Math
2:45pm	Recess	Recess	Recess	Recess	Recess
3:00pm	Study Hall	Study Hall	Study Hall	Study Hall	Study Hall
3:40-3:45	Clean-up & Dismissal	Clean-up & Dismissal	Clean-up & Dismissal	Clean-up & Dismissal	Clean-up & Dismissal

SCHEDULES

Ms. Caladiao's Schedule 2024-2025

	Monday	Tuesday	Wednesday	Thursday	Friday
8:15-8:30am	Morning Work: Complete Weekly Geography and Daily Dose				
8:30-9:15am	Monday Morning Meeting (8:30-9:00)	Science	Social Studies	Science	Social Studies
9:15-9:45am	Social Studies	Reading	Reading	Reading	Reading
9:50-10:05am	Recess	Recess	Recess	Recess	Recess
10:10-10:35am	Reading	Daily Dose Vocabulary	Daily Dose Vocabulary	Daily Dose Vocabulary	Daily Dose Vocabulary
10:40-11:25am	PE	Spanish	Spanish	PE	Music
11:30-11:55am	Daily Dose Vocabulary (Launch Writing)	Writing	Writing	Writing	Writing
12:00-12:25pm	Recess	Recess	Recess	Recess	Recess
12:25-12:55pm	Lunch	Lunch	Lunch	Lunch	Lunch
1:00-1:50pm	Math	Math	Math	Spanish	Math
1:55-2:40pm	Design Lab (Week 1)	Art	Extra LA Block - Projects/IXL	Math	Extra LA Block - Projects/IXL
2:45pm	Recess	Recess	Recess	Recess	Recess
3:00pm	Study Hall	Study Hall	Study Hall	Study Hall	Study Hall
3:40-3:45	Clean-up & Dismissal	Clean-up & Dismissal	Clean-up & Dismissal	Clean-up & Dismissal	Clean-up & Dismissal

CLASSROOM PROCEDURES

- **Before School Care: 7:00 - 8:05AM**
- **Arrive to classroom by 8:10 to begin morning work, with a Morning Meeting/ Check-in Daily at 8:20am.**
- **Language Arts: Focus on Daily Vocabulary and Standards, Literature Discussions from reading Independently, Writing Instruction and Practice activities as a class to prepare for next assigned independent practice.**
- **Students will have an outside morning snack and a Lunch in assigned seating .**
- **Math: Daily Spiral Reviews, Homework Check-ins/Review and Lesson**
- **Daily Specialty Blocks**
- **Social Studies will be on Mondays, Wednesdays and Fridays with Science being on Tuesdays and Thursdays. These blocks Include note taking, videos, whole class Instruction and smaller group discussions.**

- **Study Hall: 3:00-3:45 daily in our classroom. Please plan your pick up after study hall to avoid distractions during this important work time. This time should be used for quiet homework time. Study hall is a great time for students with conference/check-in with their teacher.**

- **After School care: 3:45 - 6:00PM**
- **Birthdays! We love to Celebrate!**
- **5th Grade Expectations, Ways To Be and SEL - Weekly and trimester Glows and Grows**
-



SCHOOL SCHEDULE

- **School hours:**
 - **Campus Hours of Operation: 7:00AM - 6:00PM**
 - **Financial Office Hours: 7:30AM - 4:00PM**
- **Academic hours:**
 - **JrK Academic Hours: 8:15AM - 3:45PM (3:00 - 3:45 early dismissal window)**
 - **Elementary School Academic Hours: 8:15AM - 3:45AM (3:00PM - 3:45PM K-5th study hall/ early dismissal window)**
 - **Middle School Academic Hours: 8:20AM - 3:45PM**
- **Arrival & Dismissal hours:**
 - **AM drop off for non-B&A students: 8:00AM - 8:15AM**
 - **PM pick up for non-B&A students: 3:45 - 4:00PM**
 - **Early Pick Up option for JrK-5th: 3:00PM - 3:45PM**
- **B&A hours:**
 - **Before School Program Hours: 7:00AM - 8:00AM**
 - **After School Program Hours: 4:00PM - 6:00PM**



BEHAVIOR SYSTEMS

At Merryhill we follow four agreements that encompass many behaviors: Attentive Listening, Appreciation/No Put downs, Participation, and Mutual Respect.

When we follow the four agreements, our learning environment feels safe, warm, and productive. We want our classroom to be encouraging and conducive to learning at all times. In this way, young people develop positive attitudes and behavioral skills that are so necessary for successful lives. Every action has an outcome – a reward (internal or external) or consequence. When a child does not follow a rule, there are logical consequences. They may be removed from an activity until their behavior changes.

Consequences

1. Identification of behavior and reminders of positive and appropriate choices
2. Redirection and/or offering of choices
3. Short term recovery in an appropriate setting
 - Think time sheet
4. Referral to administration if behavior continues



BEHAVIOR SYSTEMS

Extreme behaviors, such as fighting, bullying, etc., may warrant skipping the verbal warning stage and/or think time, proceeding to a recovery space or office visit immediately. Misbehavior will be viewed as an opportunity for individual problem solving and learning. If you have questions about your child's behavior, please keep the line of communication open.

Students who encompass our FIERCE traits will be spotlighted monthly and participate in our admin lunch, they will also be recognized each trimester in our classroom. We will work together as a class to earn both individual with our school wide economy (mustang bucks) and whole class incentives (marbles).

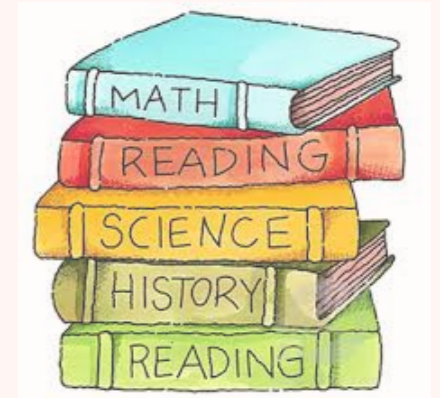
Each student is expected to come prepared to class each day with a charged iPad, homework (folder) and planners as well as following all uniform guidelines.



HOMework PROCEDURES

Homework” is independent practice of skills learned in the instructional blocks of the day and/or week. Students record their independent work daily in their planners and will be taken home in their homework folder. This should reflect Schoology as well.

Students should expect approximately 45-60 minutes of homework” or independent work each day in addition to daily reading. Please remember to review your child's agenda daily in order to stay up to date on assignments.



Friday Folders will not be used. Students will take ownership of taking home returned work to be reviewed with parents. This is in preparation of moving class to class in sixth grade and being responsible for work. During trimester 3 most work will be solely posted on Schoology.



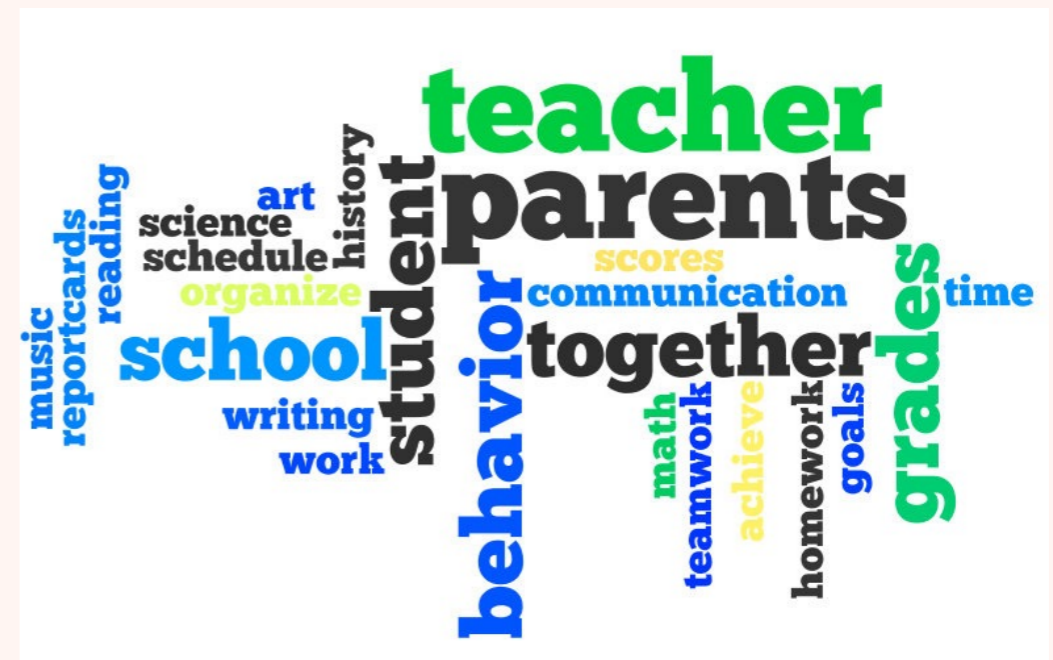
GRADING PROCEDURES

Assignments should be turned in of the due dates or late assignments will receive 20% off for trimester 1 and 2 and 50% during trimester 3. Students may redo most homework and classwork assignments once and re-submit corrections for a higher grade provided they fix their errors and on a separate piece of paper explain their error or how/why their answer is now correct. Corrections should be turned in within a week of being returned to the student.

Projects: These are designed to reinforce and assess learned material throughout a unit. Students will work on these assignments both during their Independent/Activity blocks built in their day and may extend beyond school hours. Project grades are final. I will provide feedback on projects or project components submitted early. Late projects will be marked down 10% for each day late and after a week a late project will no longer be accepted and the student will receive a "0".

GRADING PROCEDURES

- Grading:
 - Formal assessments
 - Classwork
 - Homework
 - Projects
 - Feedback
- Progress Reports
- Missing work
- Report Cards
- Honor Roll



FIELD TRIPS

- **February 12th - 916 Ink: Writing integration field trip!**
Empowers children and youth through creative writing! We provide workshops for children throughout the Sacramento region.
- **March 31st-April 2nd - Sierra Journeys Science Camp - Grizzly Peak Ranch**



GET INVOLVED

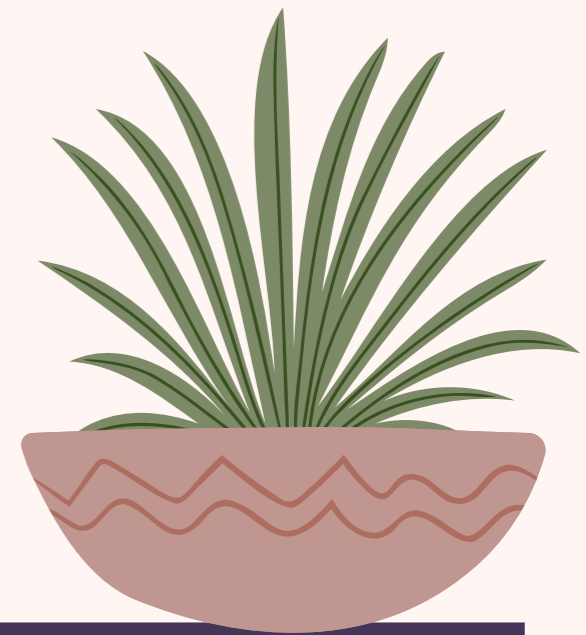
- Attend school events like grade level socials
- Volunteer for school events like Trunk or Treat, the Harvest Festival or the Spring Golf Tournament
- Use the class directory to connect with other families outside school

REGISTER FOR SCHOOL
DIRECTORY




COMMUNICATION

- **School Newsletter: Every Sunday from administration**
- **Classroom News: Every Friday**
- **Website - Policies and Schedule under "Student Resources"**
- **Email: Response within 24 hours**
- **Parent/Teacher (and student) conferences**



COMMUNICATION



Home	Meet the Teacher	Class Schedule	Class Expectations	Homework	Learning Platforms	Grading Policy	
------	------------------	----------------	--------------------	----------	--------------------	----------------	--

oo *ee*

Welcome to 5th Grade

Mrs. Laudato
Room 205

ee *ee*

© 2014 Chalk & Apples